

**FOR SALE : Heavy Plate  
Mill - Thyssen Krupp.**

**Complete or in Parts.**

- Location: Duisburg- Hüttenheim,  
Germany



thyssenkrupp



**Hilco Global**<sup>TM</sup>  
Vested in Your Success



# Short Introduction:

The Heavy Plate Mill was originally built by the Mannesmann company.

In 1970 the August Thyssen Hütte AG took over the flat rolling business from Mannesmann. In 1978 the Sack company installed the 3,9 meter four-high rolling stand still in use today.

The production facility in Duisburg is dedicated to the heavy plate unit with a total production site of 215,000 m2.

## Equipment:

The equipment was continuously upgraded up to 2020. It consists of:

Pusher-Type Furnaces, Rolling Mill, Hot Leveling, Hot Crop Shear, Annealing Furnaces, Roll Leveling, Static & Rolling Quench, Double Trimming Shear, Dividing Shear, Cold Leveling, Shot-Blasting and Priming, Flame- and Plasma Cutting

## International Standards:

Certificate No. MD00/1825/0012/1

**Applications:** Shipbuilding, Heavy Pipes, Heavy Fabrications (Offshore Equipment, WindTurbines, Boilers, Vessels)

**Incoming Slab thickness range: 90-260mm**

**Min./Max. plate width: 1.500/3.800mm**

**Thickness range: 4-150mm**

**Min./Max. Plate length: 6-42m**

## Category, Grades and Max. Thickness / Diameter (mm)

Plates	Normal Strength	A, B, D, E	150 mm
	Higher Strength	FH27S, FH32, FH36	50 mm
		AH40, DH40, EH40	60 mm
		AH27S, AH32, AH36, DH27S, DH32, DH36, EH27S, EH32, EH36	100 mm
	Boiler & Vessel	360AR, 410AR	40 mm
		360, 410, 360FG, 410FG, 460FG, 490FG, 510FG	100 mm
	Ferritic Low °C	LTAH27S, LTAH32, LTAH36, LTDH27S, LTDH32, LTDH36, LTEH27S, LTEH32, LTEH36, LTFH27S, LTFH32, LTFH36, 5Ni, 9Ni	50 mm



# Heavy Plate – The basis for finished products with the highest quality requirements

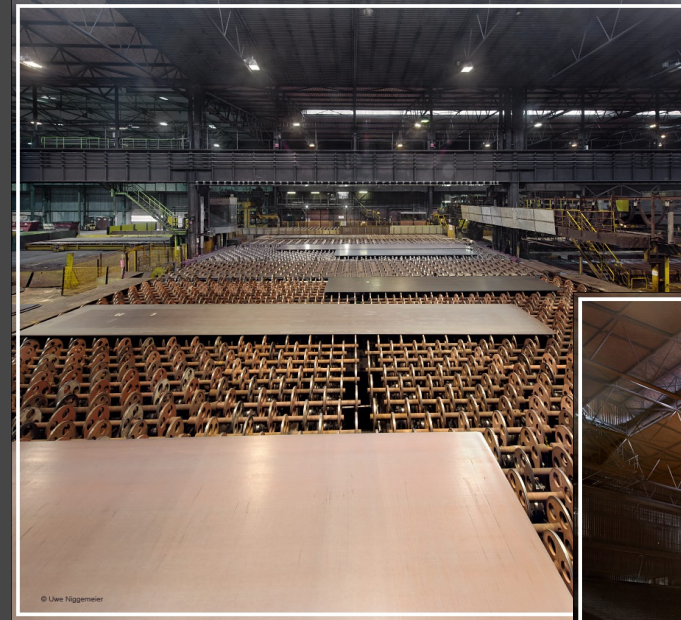
*Structural Steel*  
*Pipeline Steel*  
*Wear - resistant Steel*

*Higher-strength Steel*  
*Steel For Pressure Vessels*  
*Ballistic Steel*

The product range of the heavy plate includes quarto plates and hot rolled sheets for various fields of use as well as tailor-made steels according to customer request. The product portfolio ranges from general structural steels and pressure vessel steels via steels for shipbuilding, the manufacture of large diameter pipes up to specific special steel grades. Thus, for instance, the water-quenched and tempered heavy plates N-A-XTRA® and XABO® are used in highly stressed construction machinery such as mobile cranes, higher-strength steels perform® in lightweight construction in commercial vehicles, wear-resistant structural steels XAR® within construction machinery or mining as well as SECURE steels for the protection against ballistic threats.

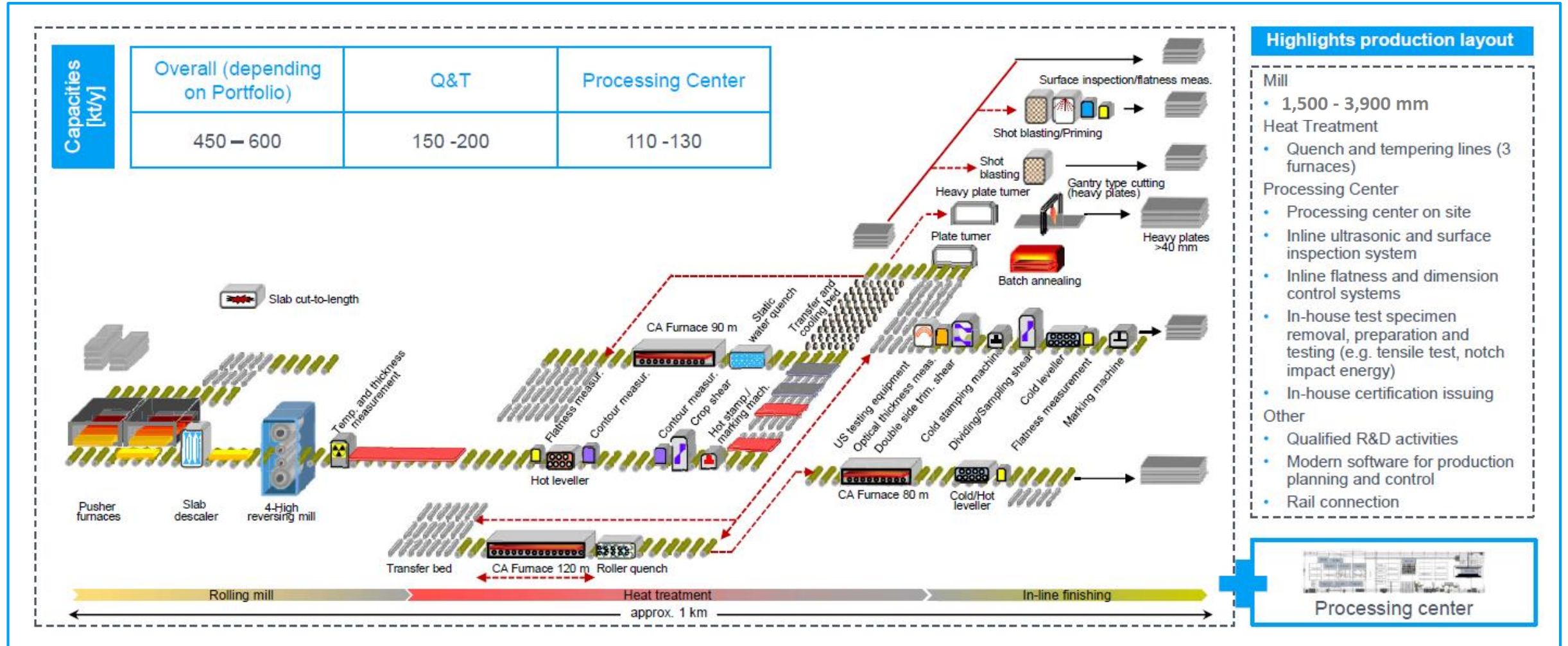
Branded Products:  
XABO® / N-A-XTRA®  
XAR®  
perform®  
patinax®

Secure  
TBL  
X-COR®  
Ni-Steel



# Production facilities Duisburg Hüttenheim

## Detailed layout of Heavy Plate unit production halls in Duisburg Hüttenheim



## Featured Equipment

- 1 **Hot Rolling Mill 4Hi - SMS SACK DEMAG** 3.900 x 4-150 mm (1978, revamped 2000's)
- 2 **Hot Leveler - SMS**, 3000 Kn, 3.800 x 8-200 mm (1990)
- 3 **Ultrasonic Testing / Thickness Measuring** 38 Sensors (2012)
- 4 **Cold Stamping / Marking Machine**, 3 Lines (2019)
- 5 **Roll Leveler - Sundwig** (2008)
- 6 **Rolling Quench** (2006)
- 7 **Cold Leveler - SMS**, 3600 x 3-25 mm (revamped 2000)
- 8 **Surface Inspection Machine** (2016)
- 9 **Flatness Measurement Unit** (2020)
- 10 **(3) Plasma Cutting Machines** (2019)
- 11 **(4) Flame Cutting Machines** (2011)
- 12 **(4) Flame Cutting Machines** (2011)

(Coming) Complete Lot Catalog on [www.hilcoind.com](http://www.hilcoind.com)

# SE-HP / Team Rolling Mill

Storage area / Slab flame cutting machine



# SE-HP / Team Rolling Mill

3,9 m Rolling mill



# SE-HP / Team Rolling Mill

Hot leveller / Hot cropping shears





# SE-HP / Team Tempering Furnaces

Roller hearth furnace R 120 / Roller-type quench



# SE-HP / Team Tempering Furnaces

Roller hearth furnace R 90 / Static quench unit



# SE-HP / Team Tempering Furnaces

Roller hearth furnace R 80 / Roller leveller



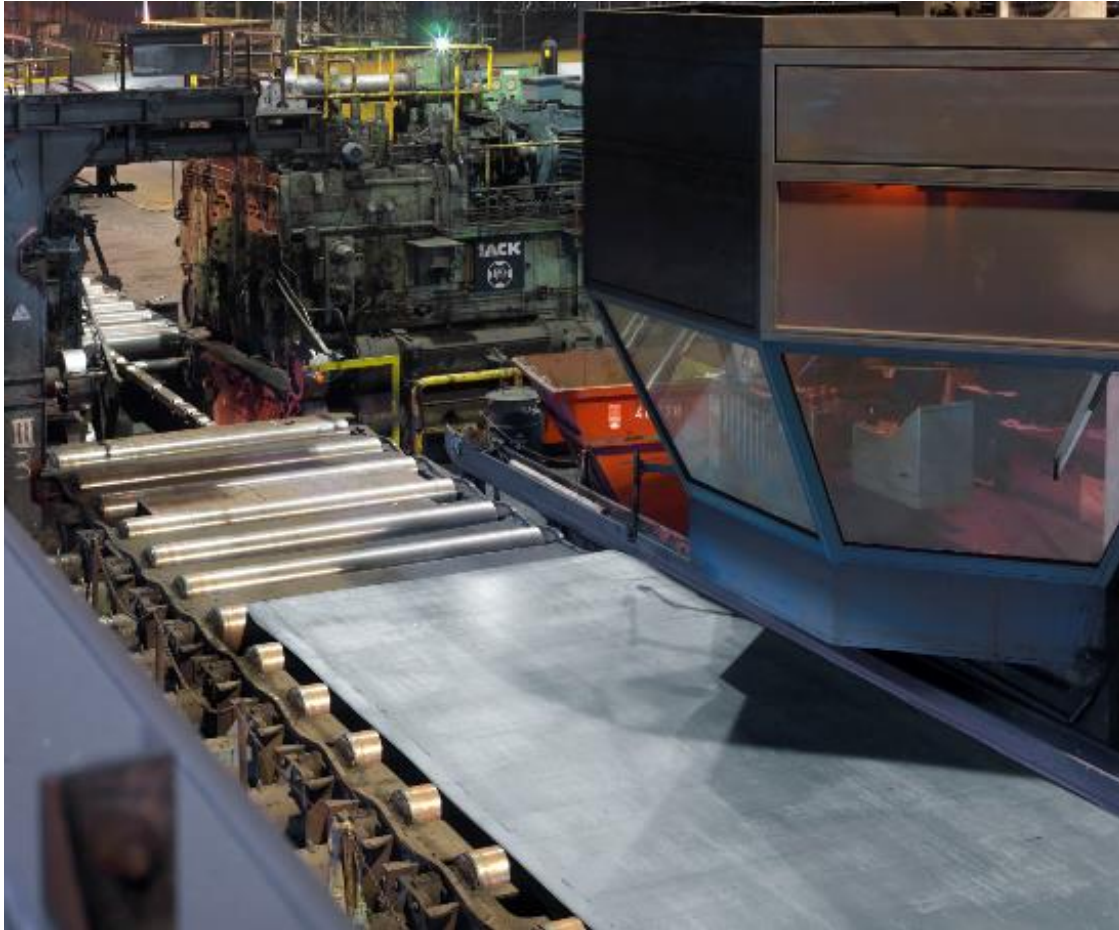
## SE-HP / Team Shearing Line

Inspection cooling bed / Plate turner



## SE-HP / Team Shearing Line

Double-side trimming shear / Ultrasonic unit



# SE-HP / Team Shearing Line

Cross-out shear / Cold plate leveller



## SE-HP / Team Shearing Line

Cold plate leveler / Flatness measurement unit



# SE-HP / Team Logistics & Descaling/Paint Spraying

Halls 14/15 / Dispatch area





## SE-HP / Team ZuV

Top-hat furnaces / Flame cutting machine Hall 26



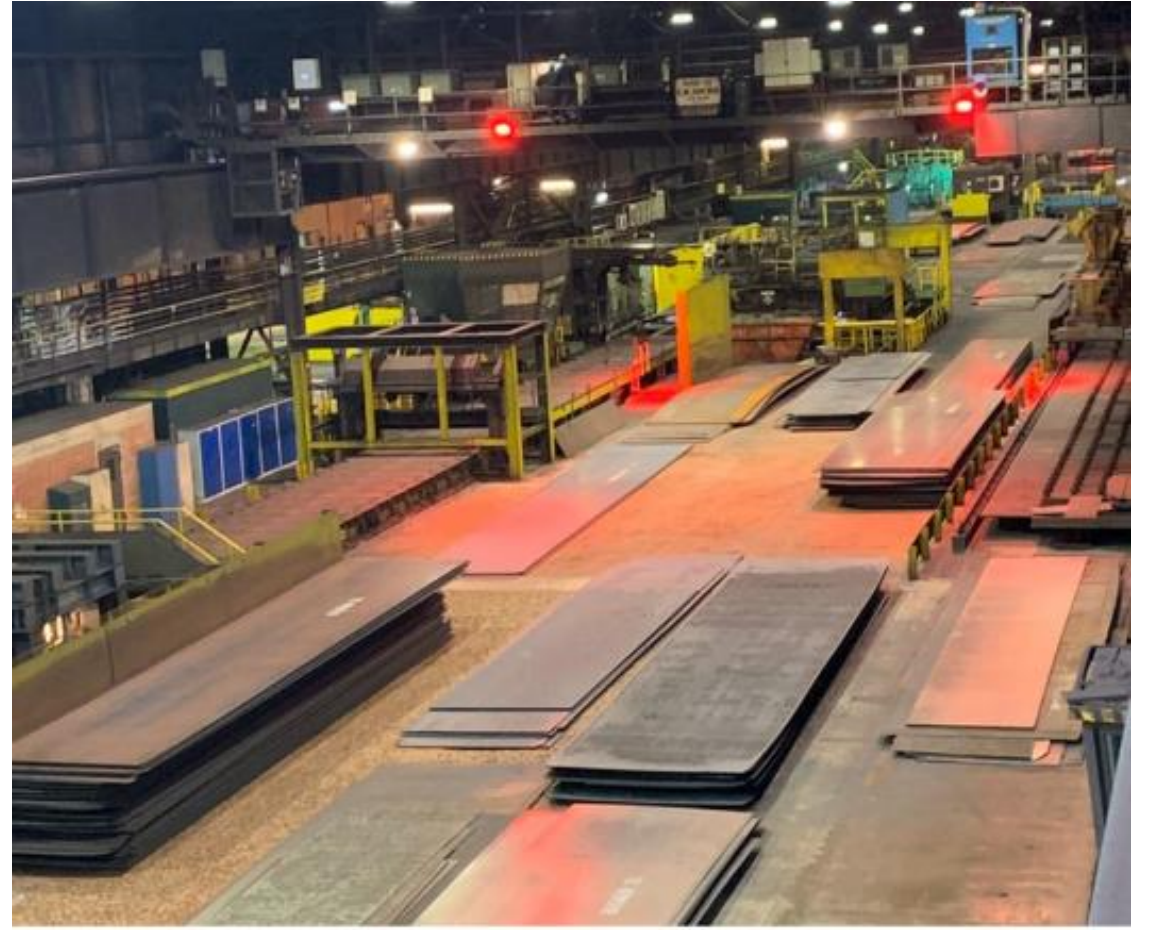
# SE-HP / Team Tempering Furnaces

Roller hearth furnace R 120



# SE-HP / Team Tempering Furnaces

Roller hearth furnace R 120 / Shearing line



# SE-HP / Team Tempering Furnaces

Shearing line



# SE-HP / Team Tempering Furnaces

Shearing line

